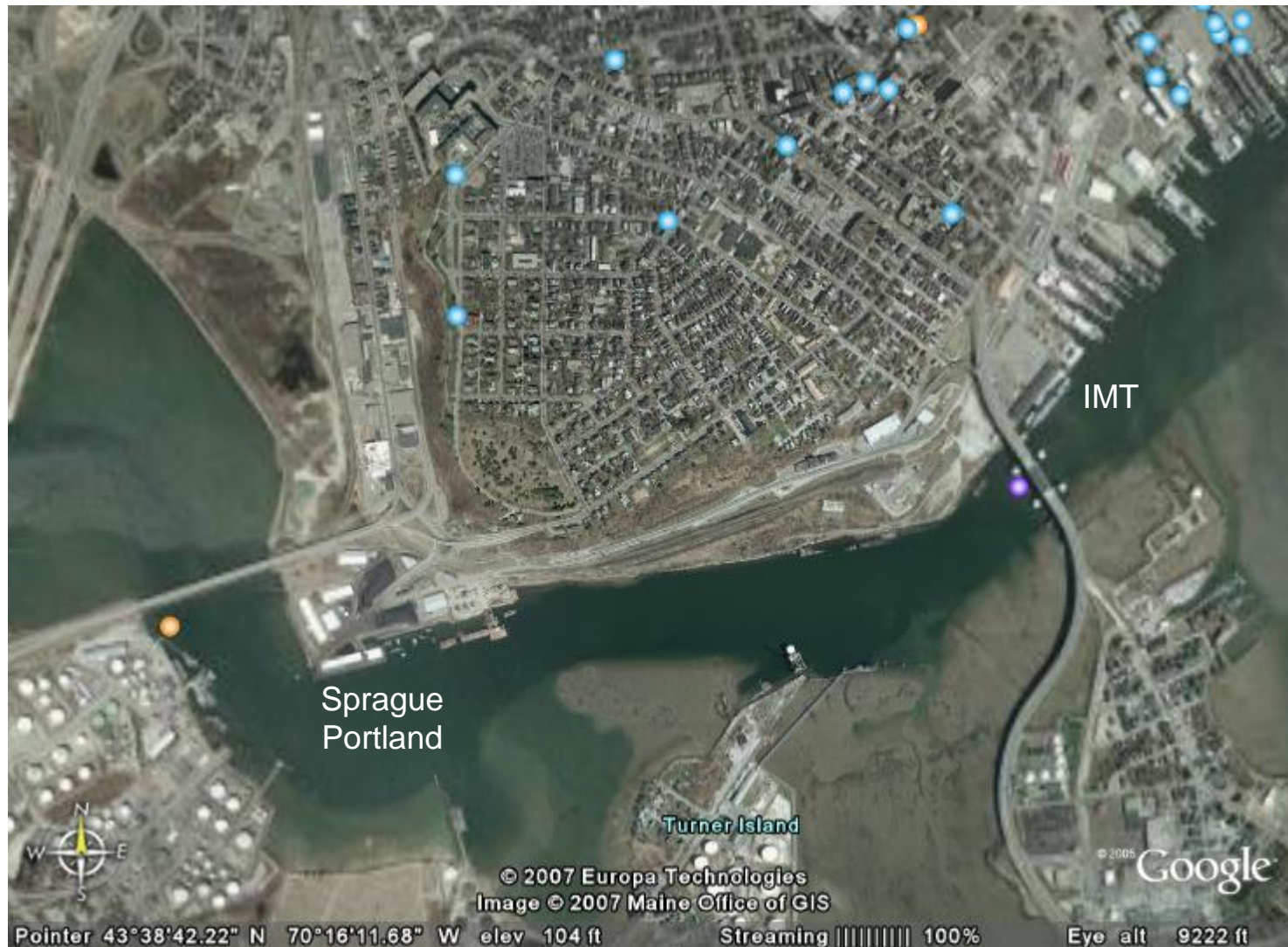

Short Sea Shipping Feeder Terminal & Container Stuffing Trans-load Facility

Container Stuffing Example

The Portland Waterfront



Container Stuffing

How it works – goods can flow in both directions



**Product taken from warehouse
and stuffed into Container**



**Trucked to nearby container terminal
and new empty is returned to warehouse**



Stacked in yard awaiting Ship



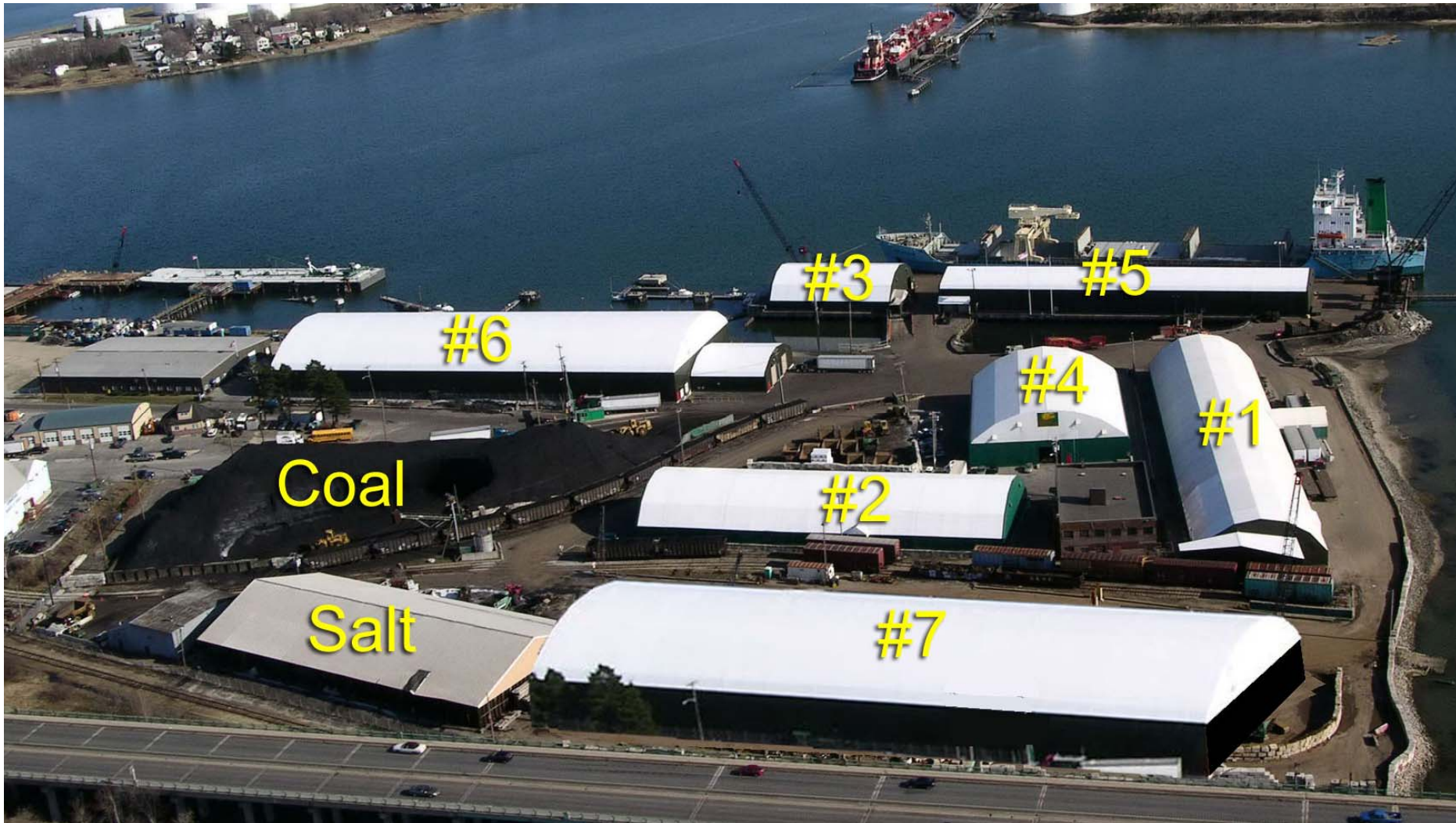
**Put back onto truck and
moved to dock**



**Put onto weekly ship or barge for
movement to NYC area terminals**

Sprague Portland Terminal

Trans-loading is done in Building #1



Feeder Terminal

The IMT Terminal in Portland ME



- Single Berth
- 6 - 13 acres
- No Rail
- ILA

Portland Feeder Service Offering Overview

- Participants:
 - Pan Am Railways – goods moved to Portland in boxcars
 - Sprague – trans-loaded into containers
 - Ports America – Container loaded on and off barge
 - Columbia Coastal Transportation – Barged to/from NYH.
 - Maine Port Authority & City of Portland Division of Ports
- Started Service in August 2007
- Phase 1:
 - Running bi-weekly
 - Will move approximately 12,500 TEU's in first year
- Phase 2:
 - Going to weekly service
 - Incorporating imports/goods currently trucked into Maine
 - Expected TEU's in year 2 of 25,000

Providence Opportunity – Container Feeder Service

Overview



Providence Opportunity

Container terminal at ProvPort



Providence Opportunity

Potential Trans-load Site on Allens Ave



Providence Opportunity

- Many of the same components are already in place in Providence:
 - Railroad to Port – P&W
 - Container handling capability: Ports America and Waterston
 - Columbia Coastal Transportation – willing if enough activity can be secured
- What is needed:
 - A champion at the State and or City level
 - The region needs a port authority to compete.
 - New Bedford/Fall River and New Haven are all trying to fill the void to Southern New England.

Alternative Approach

53 foot trailer ferry service

