

# Rhode Island's Commercial Ports and Harbors: Statewide Inventory of Commercial/Industrial Use and Infrastructure (as of July 2008)

Presentation to the Special Legislative Commission to Study Economic Opportunities in the Development of Port Facilities in the State of Rhode Island. March 19, 2009. Room 313 of the Rhode Island State House.



With Support Rhode Island's Statewide Planning's  
Challenge Grant Program  
And  
Rhode Island Sea Grant/University of Rhode Island Coastal Resources Center

## PRELIMINARY RESULTS SUBJECT TO REVISION



Staff: Jen McCann, Don Robadue, Austin Becker  
Rebecca Bannon, Angela Wilson

March 19, 2009



### Steering Committee

Jared Rhodes, Rhode Island Statewide Planning

Walter Slocomb, Rhode Island Statewide Planning

Mike Walker, Rhode Island Economic Development Corporation

Dan Goulet, Rhode Island Coastal Resources Management Council

Evan Matthews, Quonset Development Corporation

Bonnie Nickerson, Providence Dept. of Planning and Development

Ken Payne, University of Rhode Island Department of Marine Affairs

Jim Lucht, The Providence Plan

Steve Kut, Rhode Island Department of Transportation

Larry Mouradjian, Rhode Island Department of Environmental  
Management

Christopher D. Hunter, Providence Working Waterfront Alliance

## Advisory Committee

Jeanne Boyle, East Providence Planning Department  
Paige Bronk, City of Newport  
Jennifer Brady-Brown, Town of New Shoreham  
Linsey Cameron, Town of North Kingstown Planning Department  
Mark Carruolo, City of Warwick  
William Coffey, Roger Williams University Marine Affairs Institute  
Ames Colt, Rhode Island Bays, Rivers, Watersheds Coordination Team  
Steve Curtis, Waterson Terminals LLC  
Michael Deluca, Town of Narragansett Planning Department  
Steve Devine, Rhode Island Department of Transportation  
Grover Fugate, Rhode Island Coastal Resources Management Council  
Julie Gill, Oil Heat Institute of Rhode Island  
Bob Gilstein, Town of Portsmouth Planning Department  
Roberta Groch, East Providence Planning Department  
Christopher D. Hunter, Providence Working Waterfront Alliance  
Hank Kniskern, Naval Undersea Warfare Center  
Ken Kubic, Rhode Island Marine Trades Association  
Bob Kunkel, Coastal Connect  
Peter Lapolla, City of Cranston Planning Department  
Michelle Maher, Town of Warren Planning Department  
Benjamin Mazzotta, Tufts University  
Howard McVay, Northeast Marine Pilots Association  
Vin Murray, Town of South Kingstown Planning Department  
Marilyn Shellman, Town of Westerly Planning Department  
Tiffany Smythe, URI Department of Marine Affairs  
Christopher Spencer, Town of Tiverton Dept. of Planning  
Michael Steers, Little Compton Dept. of Planning  
Ed Tanner, Bristol Dept. of Planning  
Rob Thompson, URI Department of Marine Affairs  
Kenneth Walker, NOAA  
Lee Whittaker, East Greenwich Planning Department  
Jack Wiggin, UMASS Boston Urban Harbors Institute  
Rocky Weitz, The Fletcher School at Tufts University  
Lee Whittaker, Town of East Greenwich Planning Department

## Purpose

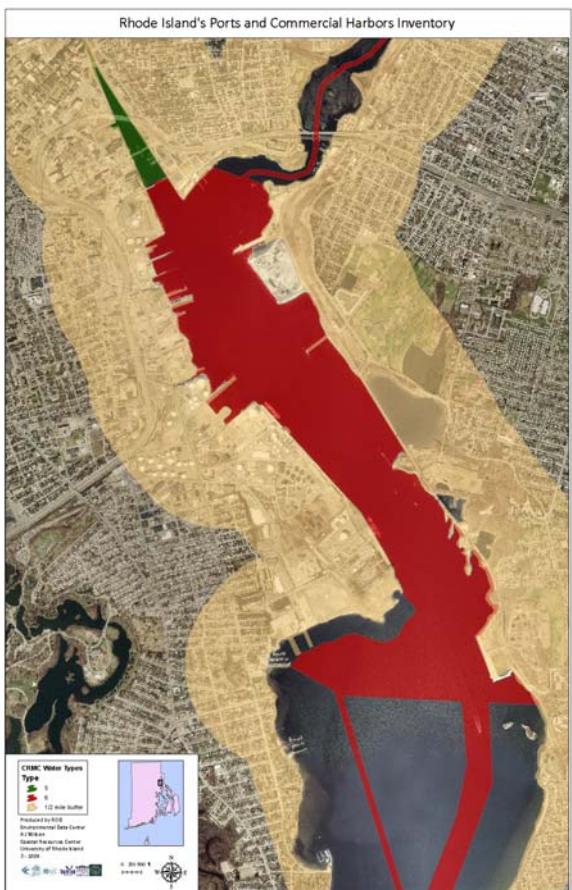
Preparation of a Geographic Information Systems based inventory of marine commercial/industrial uses and infrastructure of Rhode Island ports and commercial harbors and to establish a basis for monitoring trends in statewide waterfront assets





Identify location of:

- Type 5 Water (Commercial and Recreational Harbors)
- Type 6 Water (Maritime Industry and Commercial Navigation)



Draw:

- 1/2 Mile Buffer around Type 5 and 6 Waters





## Collect and Digitize:

- Parcel Data in Buffer Zone



## Choose relevant parcels:

- Residential parcels removed from study area
- Steering committee limits some study areas and expands others to include Commercial and Industrial Uses



## Final Study Area

### Examples

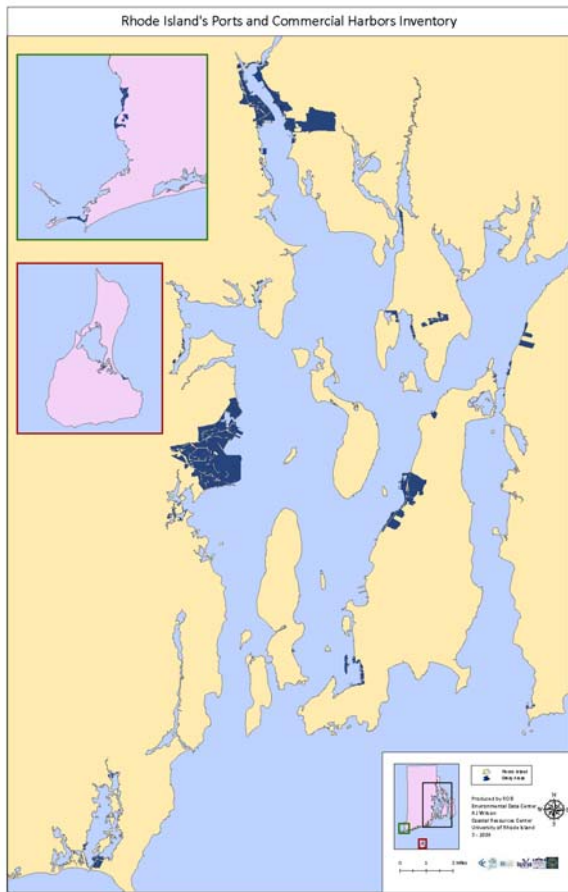
- Providence
- East Providence



## Special Features

Significant marine related infrastructure or facilities not within the 1/2 mile buffer were added to a data set



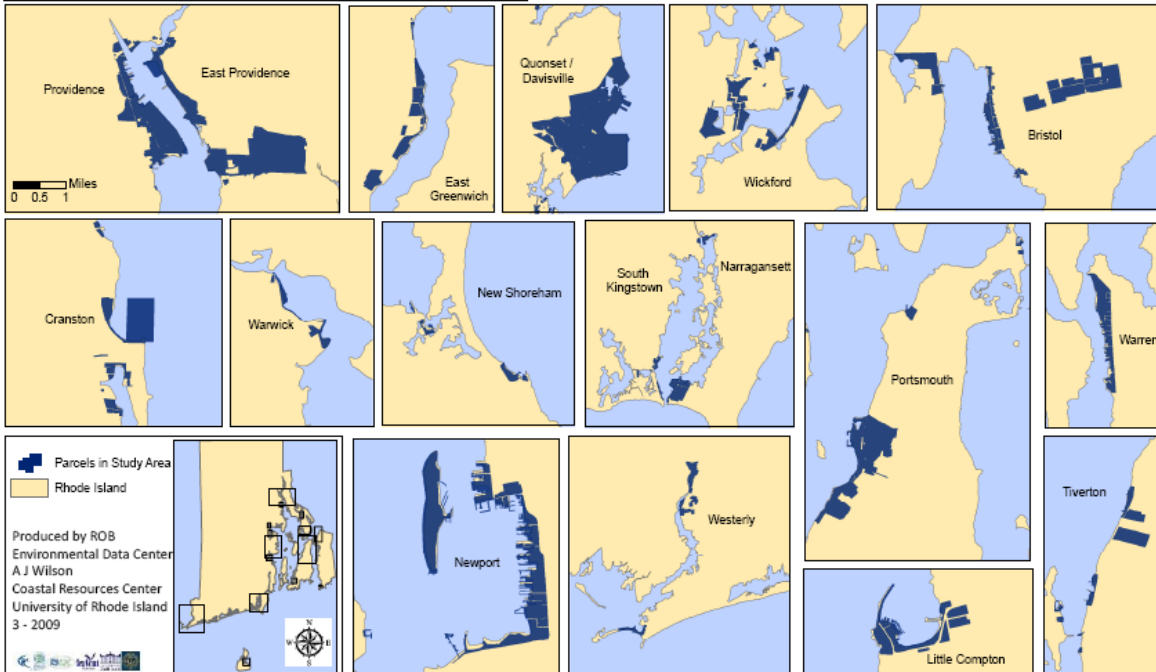


## Statewide Study Area Including Special Features

- 1637 Parcels
- 6240 Acres

## Ports and Commercial Harbors

Rhode Island's Ports and Commercial Harbors Inventory: Study Areas



## Use/Information Attributes Collected



- City
- Zoning
- Use Level
- Utilization
- Water Dependence

- Commercial/Industrial Purpose
- Marine Recreational Purpose
- Deed Restriction
- Comments on parcel use and business names

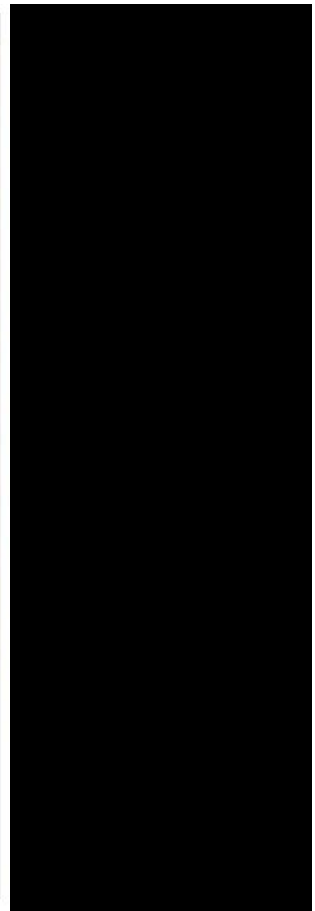
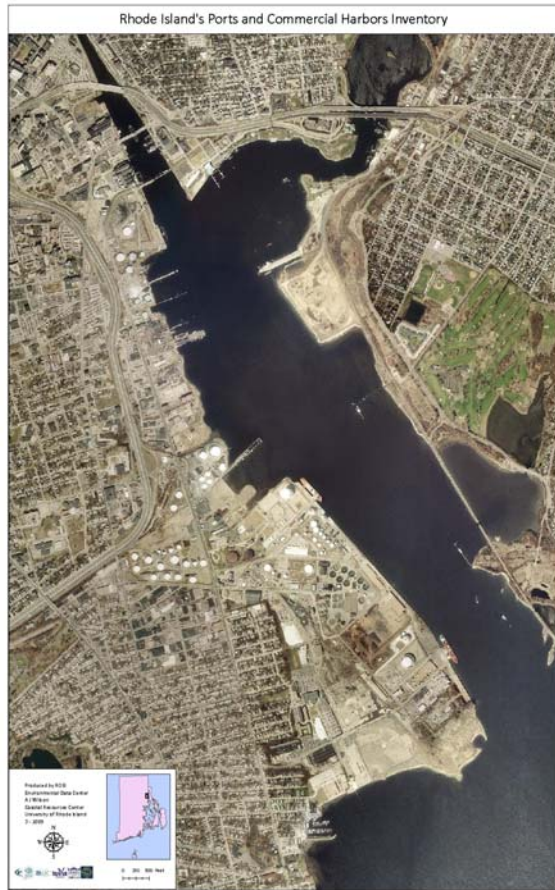
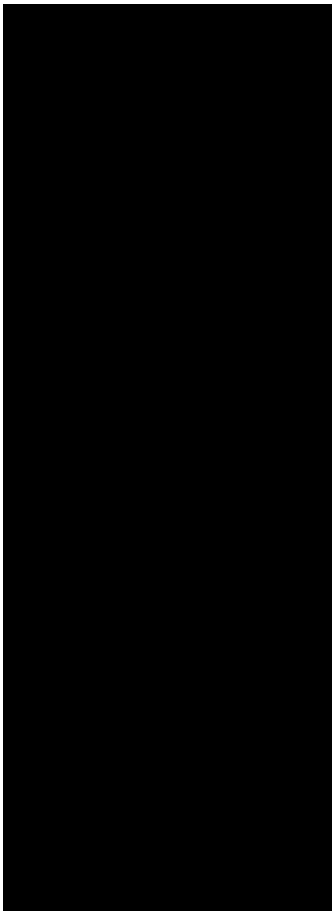


## Infrastructure Attributes Collected

- Liquid Transfer/Type
- Shore Power
- Water Service
- Pumpout Service
- Sewer Service
- Fire Facilities
- Deep Water Requirements
- Lifts
- Cranes
- Tanks
- Warehouses
- Dry Docks
- Laydown






- Pier Information
- Wharf Information
- Float Information
- Berthing Information
- Rail Information
- Pipelines



## • Utilization of Providence Waterfront

### Parcels

### Utilization

-  Marine Commercial/Industrial
-  Commercial Marine Recreation
-  Marine Recreation, Not Commercial

•(as of July, 2008)

PRELIMINARY RESULTS SUBJECT TO REVISION









# Water Dependency of Providence Waterfront

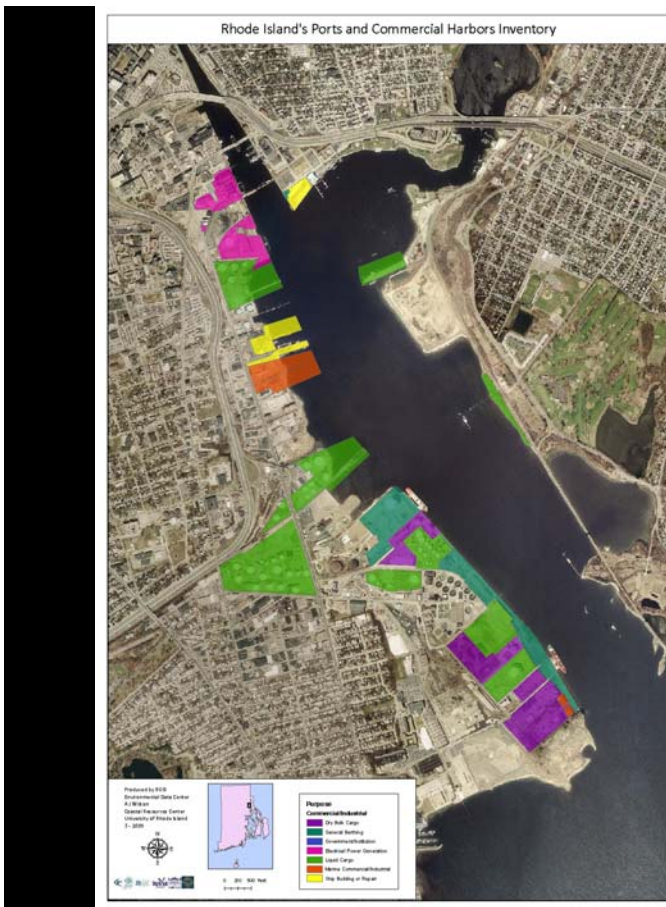
## Study Area

### Water Dependence

-  Water Dependent
-  Water Enhanced
-  Water Related
-  Not Water Related

•(as of July, 2008)

PRELIMINARY RESULTS SUBJECT TO REVISION



## Purpose

### Commercial/Industrial

-  Dry Bulk Cargo
-  General Berthing
-  Government/Institution
-  Electrical Power Generation
-  Liquid Cargo
-  Marine Commercial/Industrial
-  Ship Building or Repair

•(as of July, 2008)

PRELIMINARY RESULTS SUBJECT TO REVISION



**Commercial/Industrial Use**

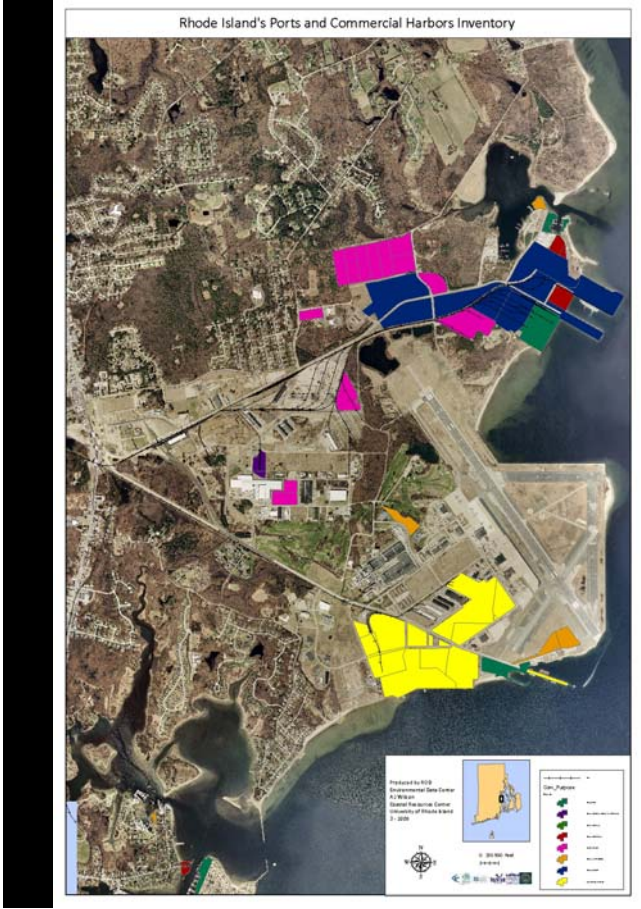
- Combination
- Commercial Fishing
- Sewer
- Ship Building

**Marine Recreation Use**

- boat ramp
- boat repair
- charter ticket sales
- commercial passenger vessel
- dockminium
- marina
- public access
- public dockage
- restaurant
- seasonal laydown
- transient slips
- yacht club

•(as of July, 2008)

PRELIMINARY RESULTS SUBJECT TO REVISION



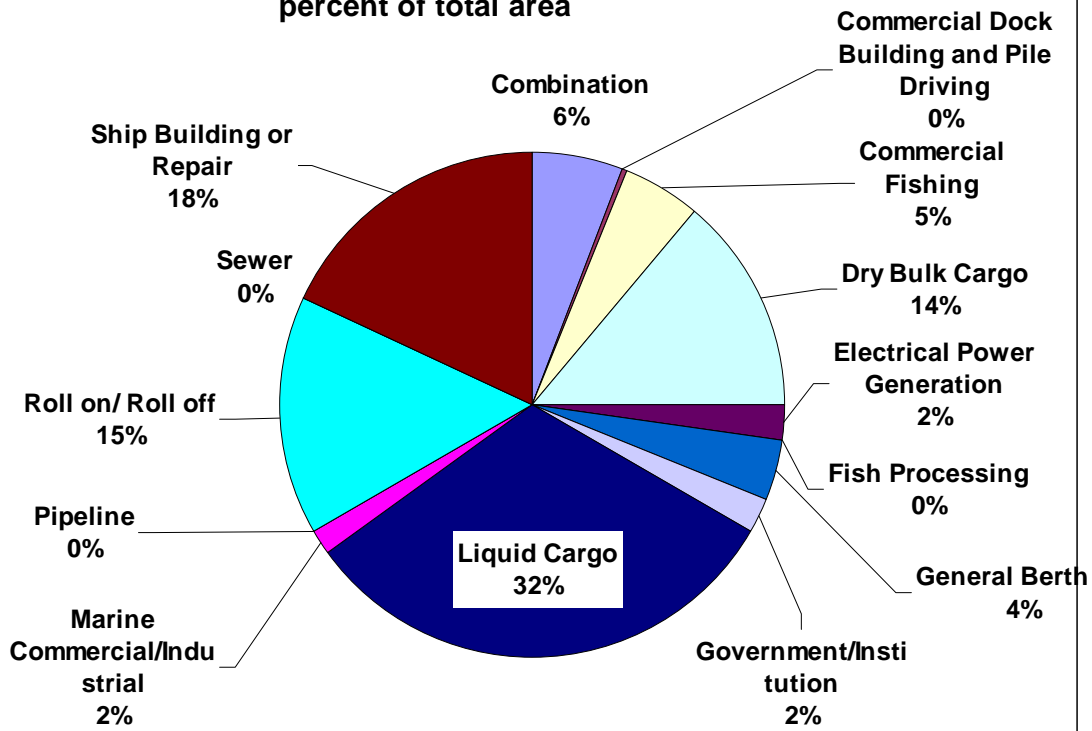
**Purposes of marine commercial and industrial parcels**

- Combination
- Commercial Dock Building and Pile Driving
- Commercial Ferry
- Commercial Fishing
- Dry Bulk Cargo
- Government/Institution
- Roll On, Roll Off
- Ship Building or Repair
- Yacht Club

•(as of July, 2008)

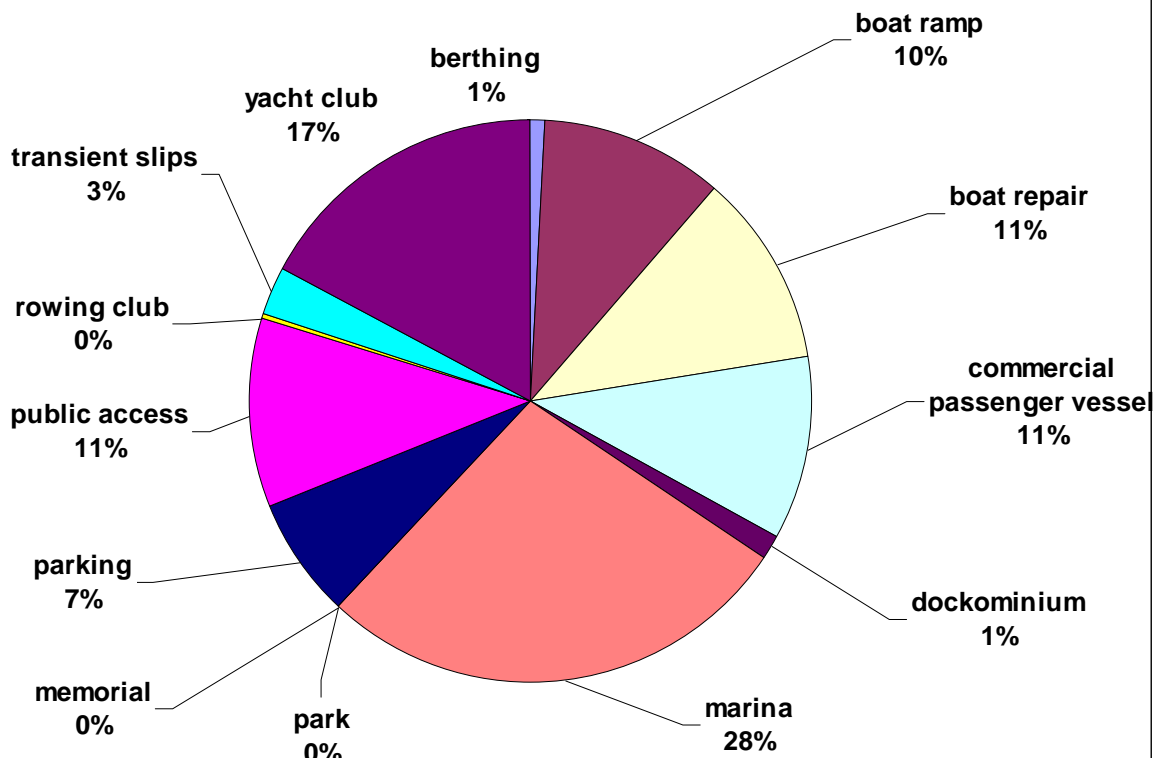
PRELIMINARY RESULTS SUBJECT TO REVISION

**Marine commercial and Industrial Parcels by Purpose** •(as of July, 2008)  
percent of total area



PRELIMINARY RESULTS SUBJECT TO REVISION

**Marine Recreation Parcels by Purpose (percent of** •(as of July, 2008)

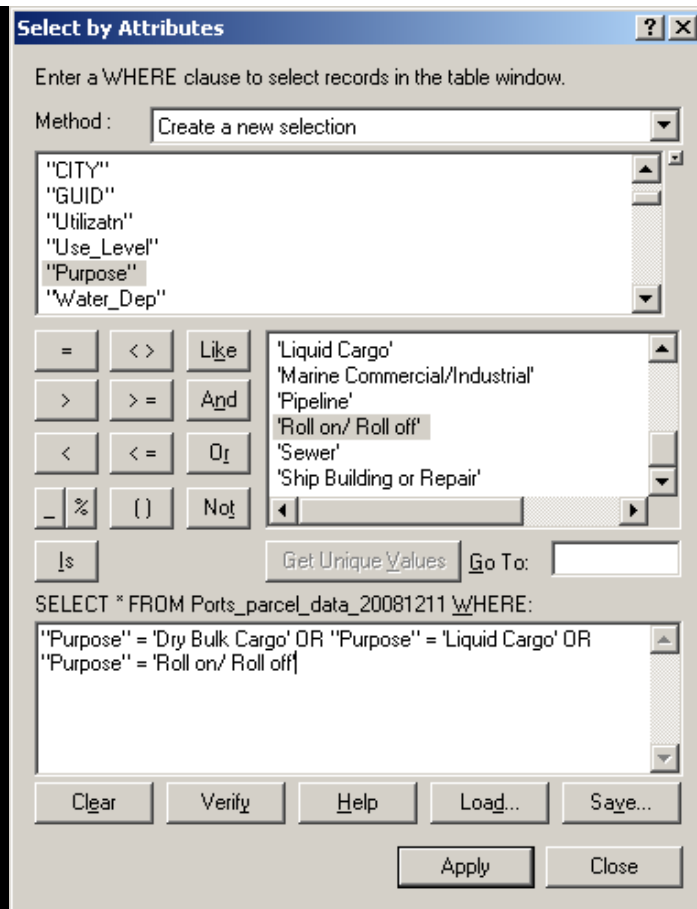


PRELIMINARY RESULTS SUBJECT TO REVISION



Queries allow the user to create map and data views that address specific questions:

How many parcels are used for shipping goods, and where are they?



Statewide  
Parcels Involved  
with Shipment  
of Goods

- 48 Parcels
- 629 Acres

•(as of July, 2008)

PRELIMINARY RESULTS SUBJECT TO REVISION



## Statewide Parcels Involved with Commercial Fishing

- 79 Parcels
- 51 Acres

•(as of July, 2008)

PRELIMINARY RESULTS SUBJECT TO REVISION



## Quonset/Davisville Vacant Parcels

- 55 Parcels
- 370 Acres

•(as of July, 2008)

PRELIMINARY RESULTS SUBJECT TO REVISION



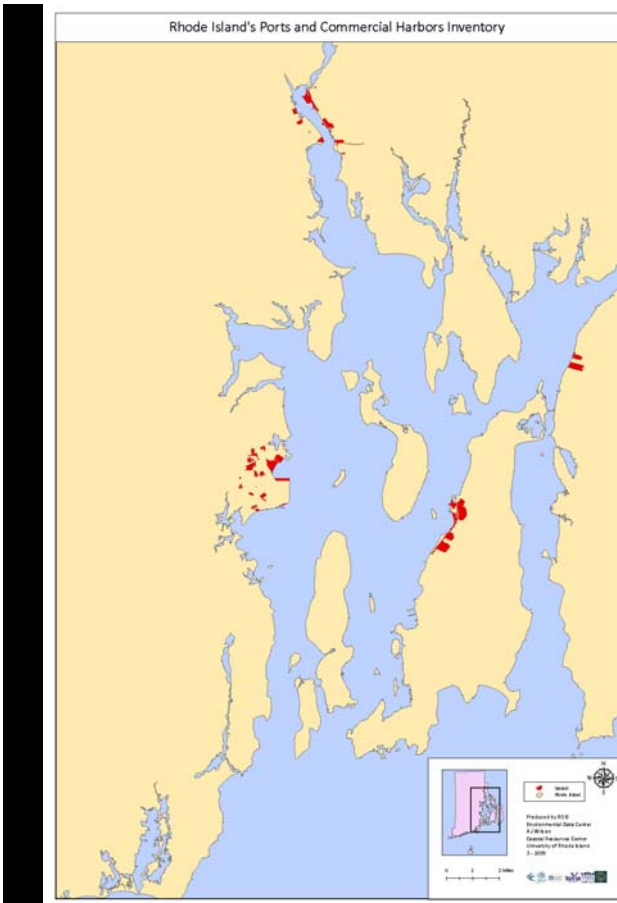


Quonset/Davisville  
Vacant Parcels  
Available for  
Potential Marine  
Use determined by  
zoning

- 35 Parcels
- 272 Acres

•(as of July, 2008)

PRELIMINARY RESULTS SUBJECT TO REVISION



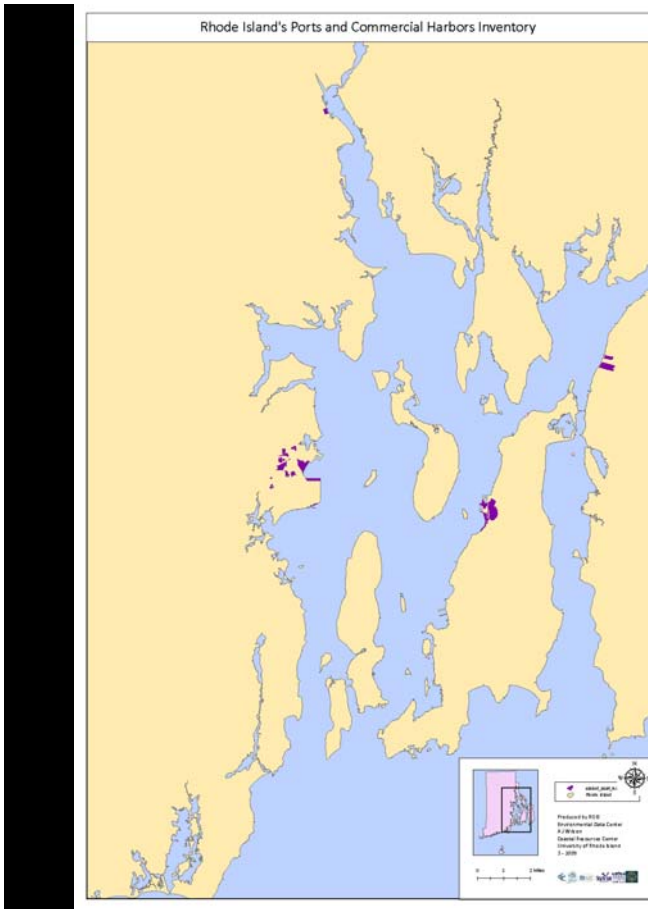
Statewide  
Vacant Parcels

- 151 Parcels
- 1299 Acres

•(as of July, 2008)

PRELIMINARY RESULTS SUBJECT TO REVISION





Statewide  
Vacant Parcels  
Available for  
Potential Marine  
Use determined  
by zoning

- 62 Parcels
- 756 Acres

•(as of July, 2008)

PRELIMINARY RESULTS SUBJECT TO REVISION



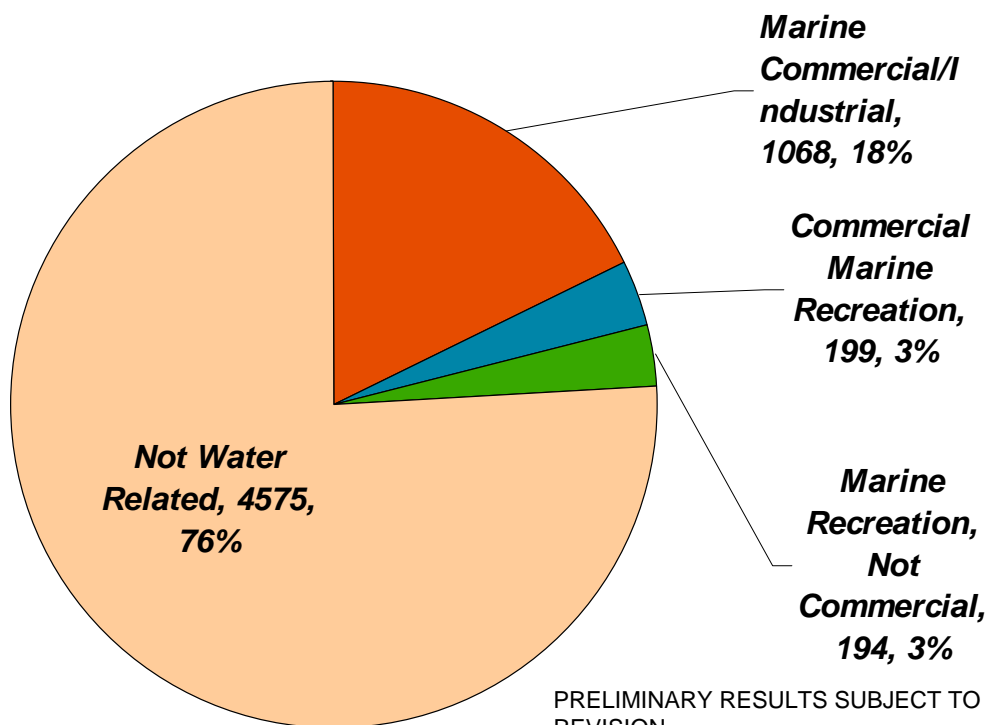
**URI / Rhode Island Sea Grant / Coastal Resources Center**



- Scientific research
- Education
- Extension projects
- Designed to help people better understand and use ocean and coastal resources

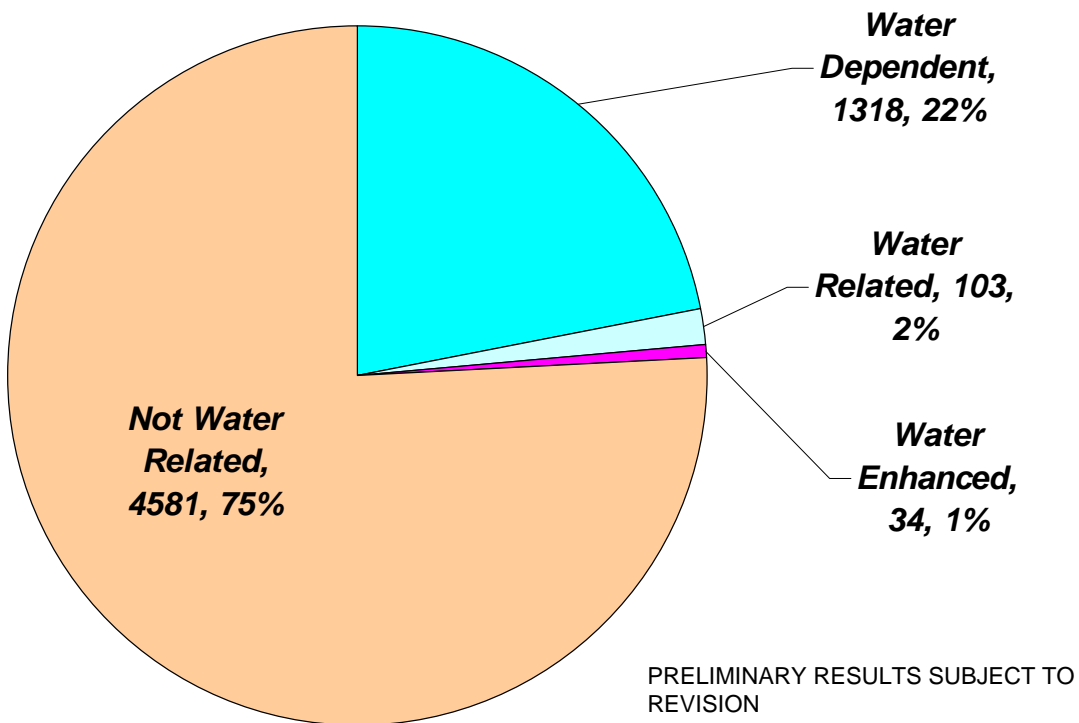
# Reference slides

**Statewide Summary: Utilization of Parcels in Study Area  
(acres, percent)**

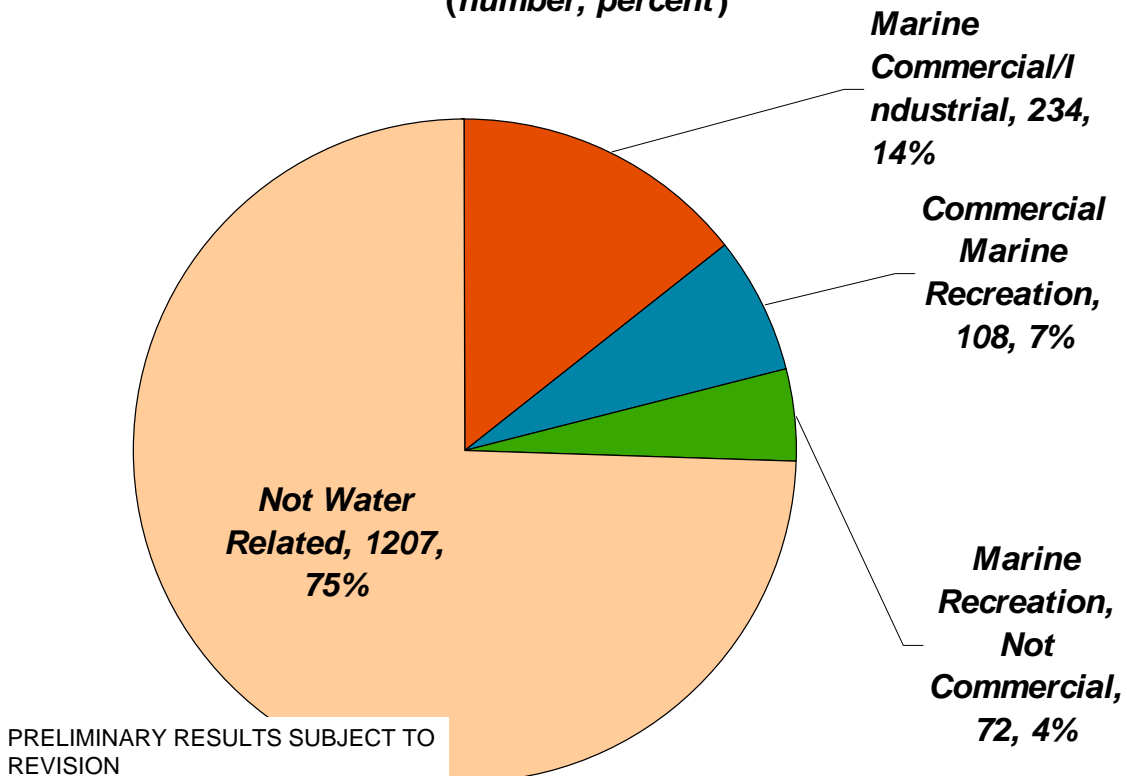


PRELIMINARY RESULTS SUBJECT TO REVISION

**Statewide Summary: Water Dependence of Parcels in Study Area (acres, percent)**

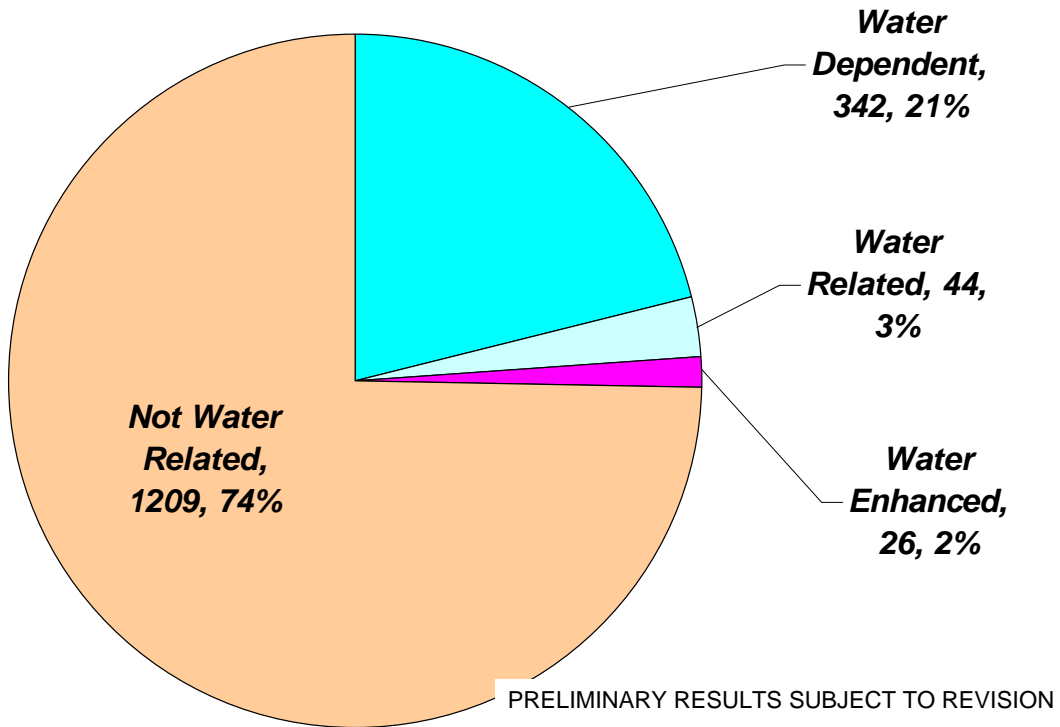


**Statewide Summary: Utilization of Parcels in Study Area (number, percent)**

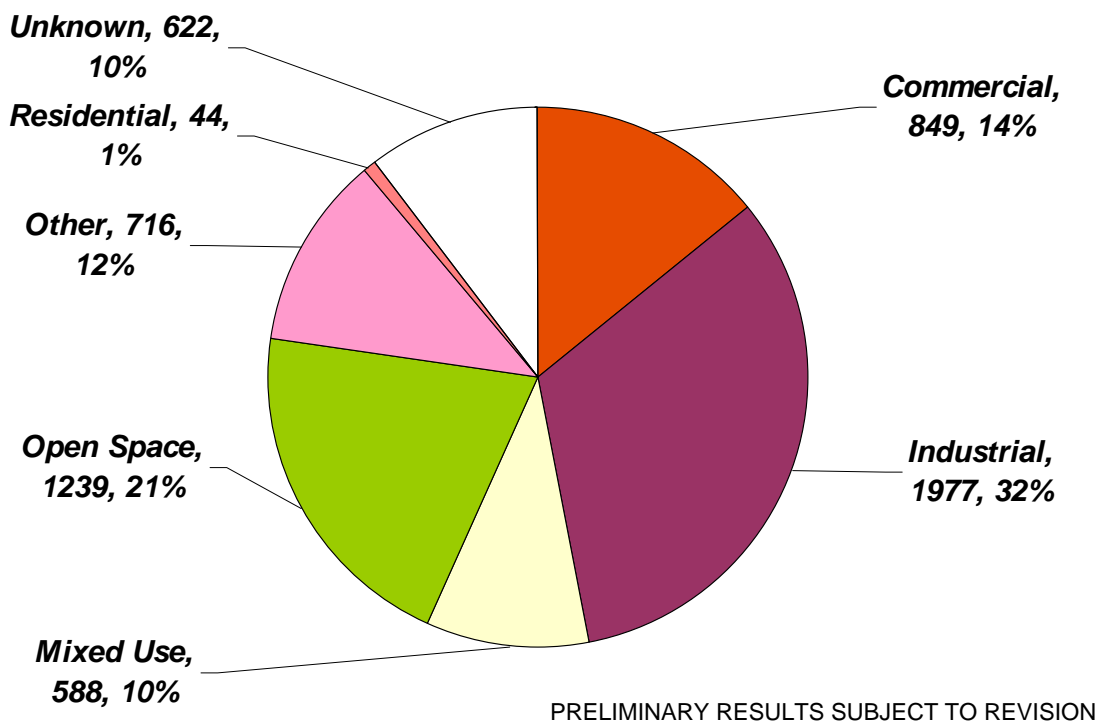




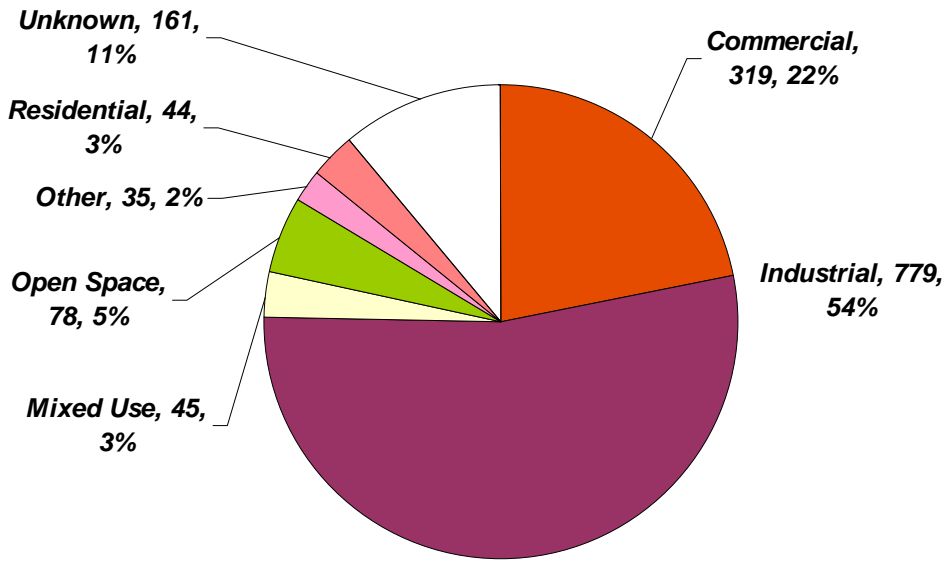
**Statewide Summary: Water Dependence of Parcels in Study Area (number, percent)**



**Zoning of All Parcels in Study Area (acres, per cent, residential excluded)**

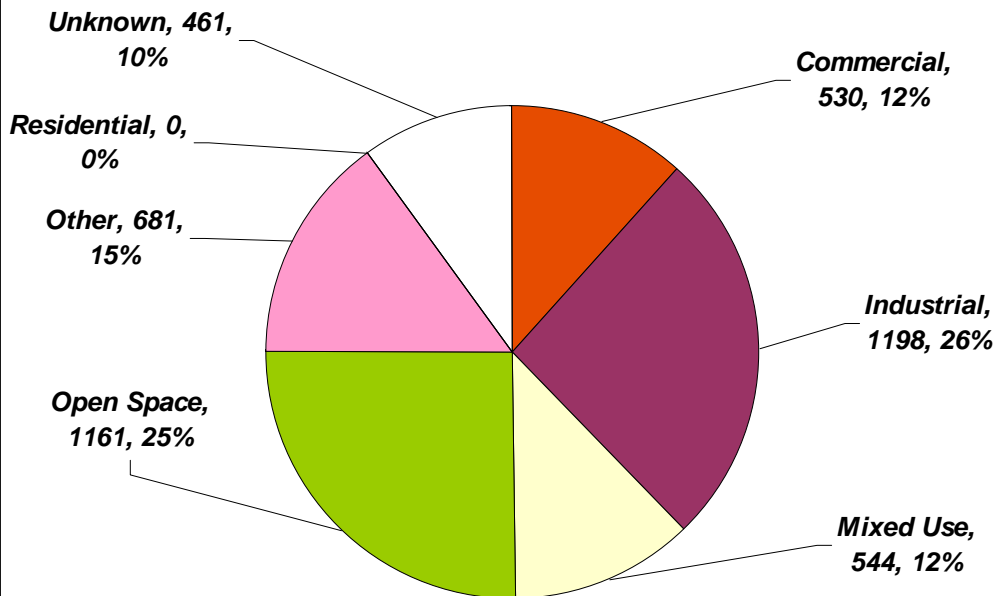


**Zoning of "Water Related" Parcels in Study Area**  
(acres, per cent, residential excluded)



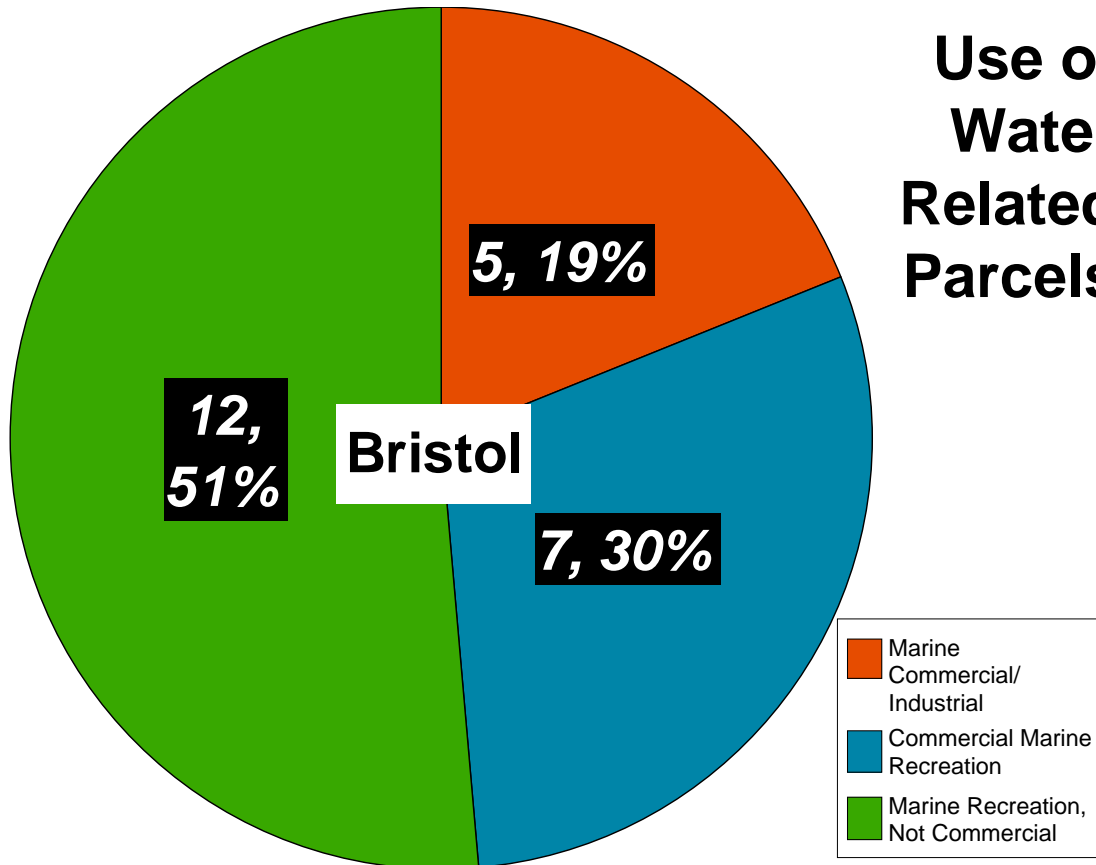
PRELIMINARY RESULTS SUBJECT TO REVISION

**Zoning of "Not Water Related" Parcels in Study Area**  
(acres, per cent, residential excluded)



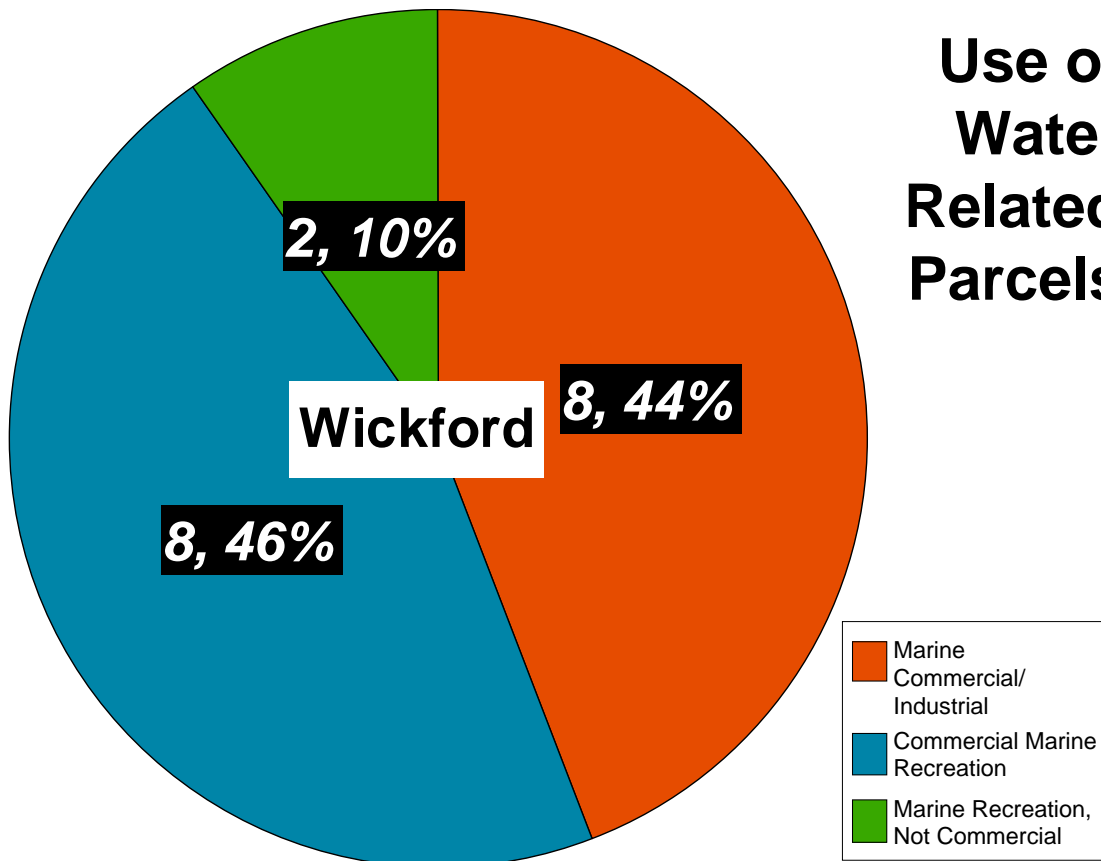
PRELIMINARY RESULTS SUBJECT TO REVISION

## Use of Water Related Parcels



PRELIMINARY RESULTS SUBJECT TO REVISION

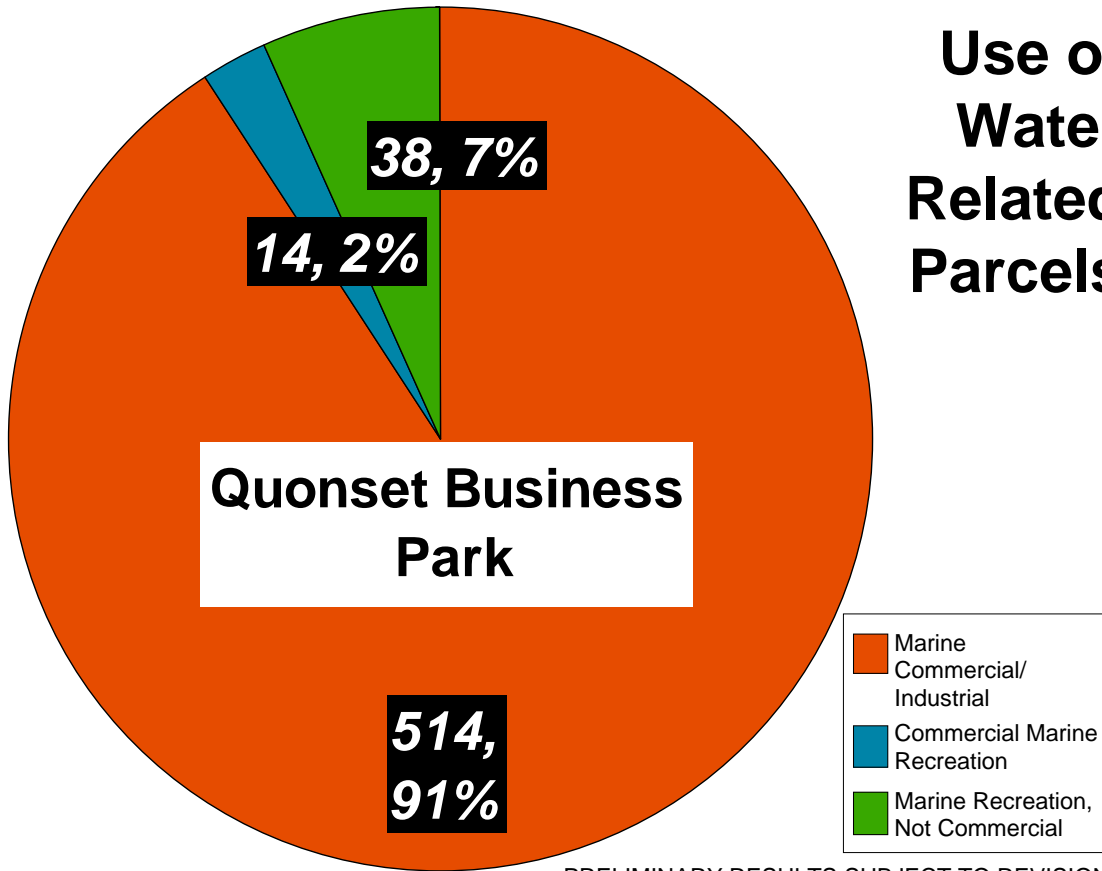
## Use of Water Related Parcels



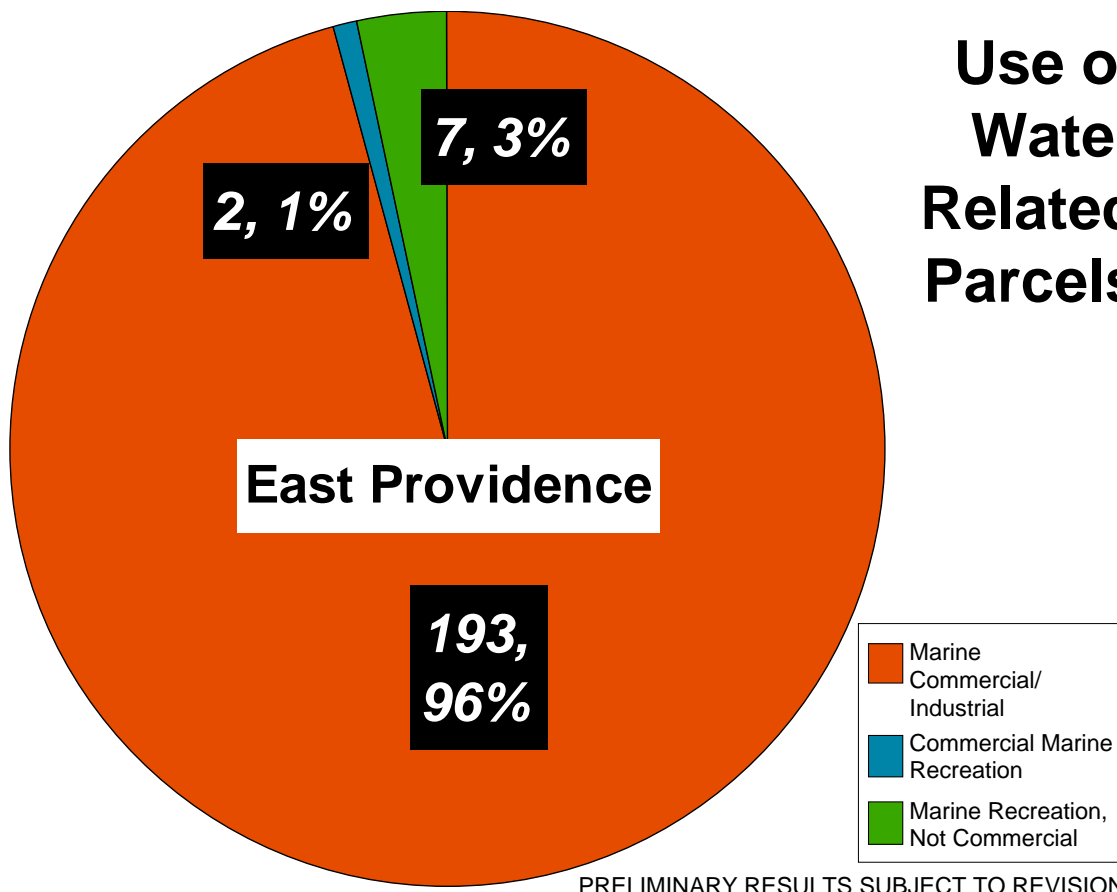
PRELIMINARY RESULTS SUBJECT TO REVISION



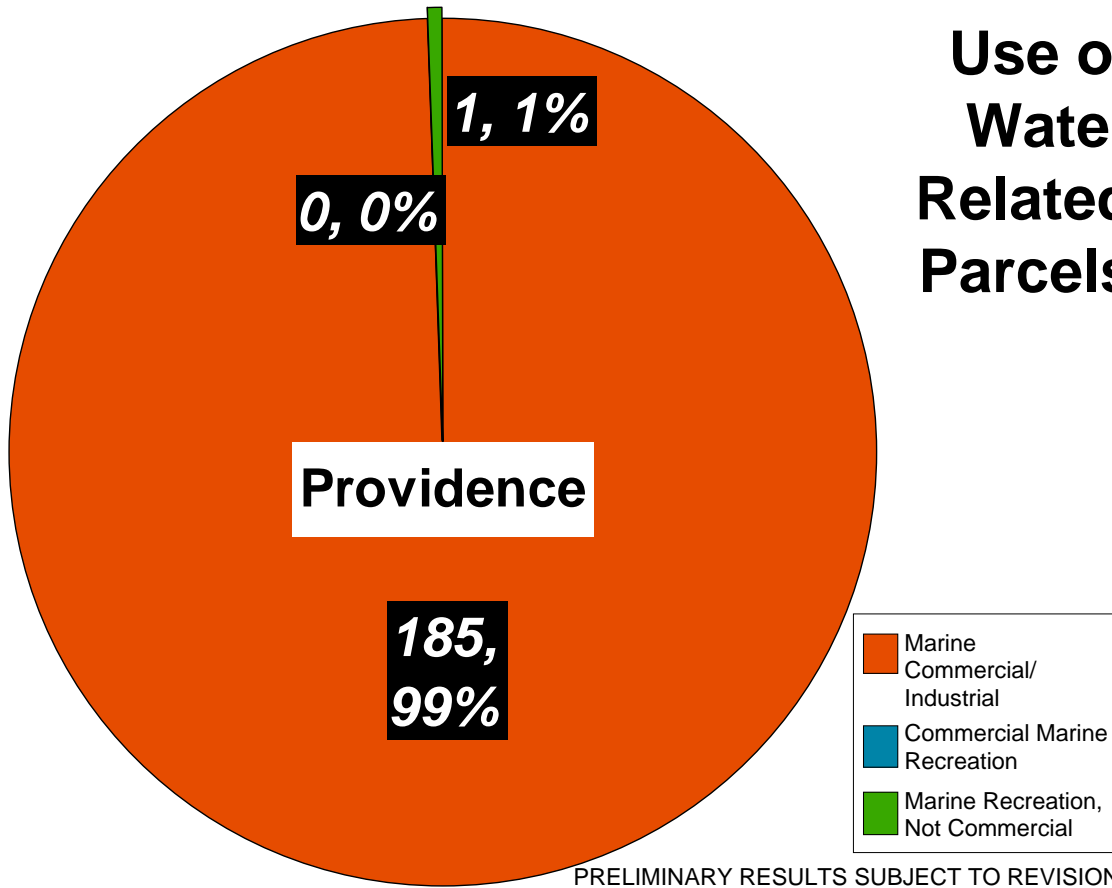
## Use of Water Related Parcels



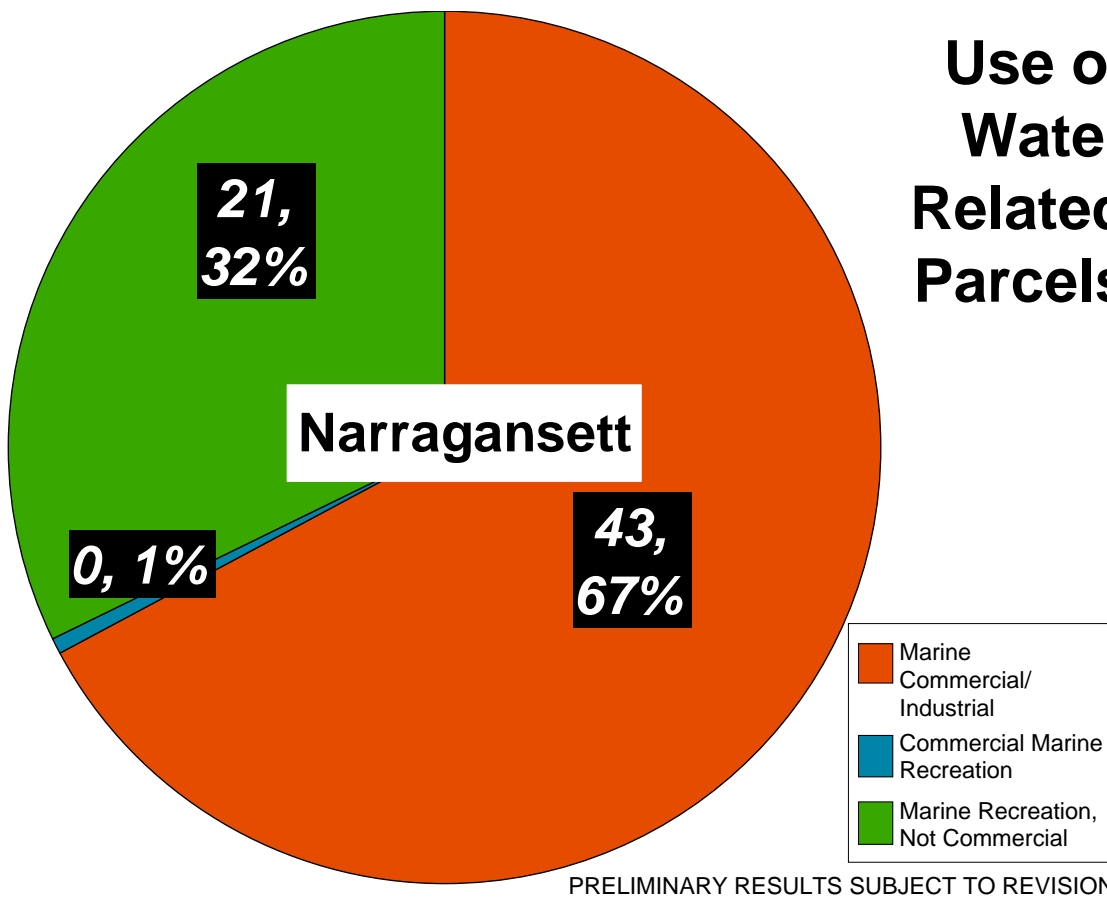
## Use of Water Related Parcels



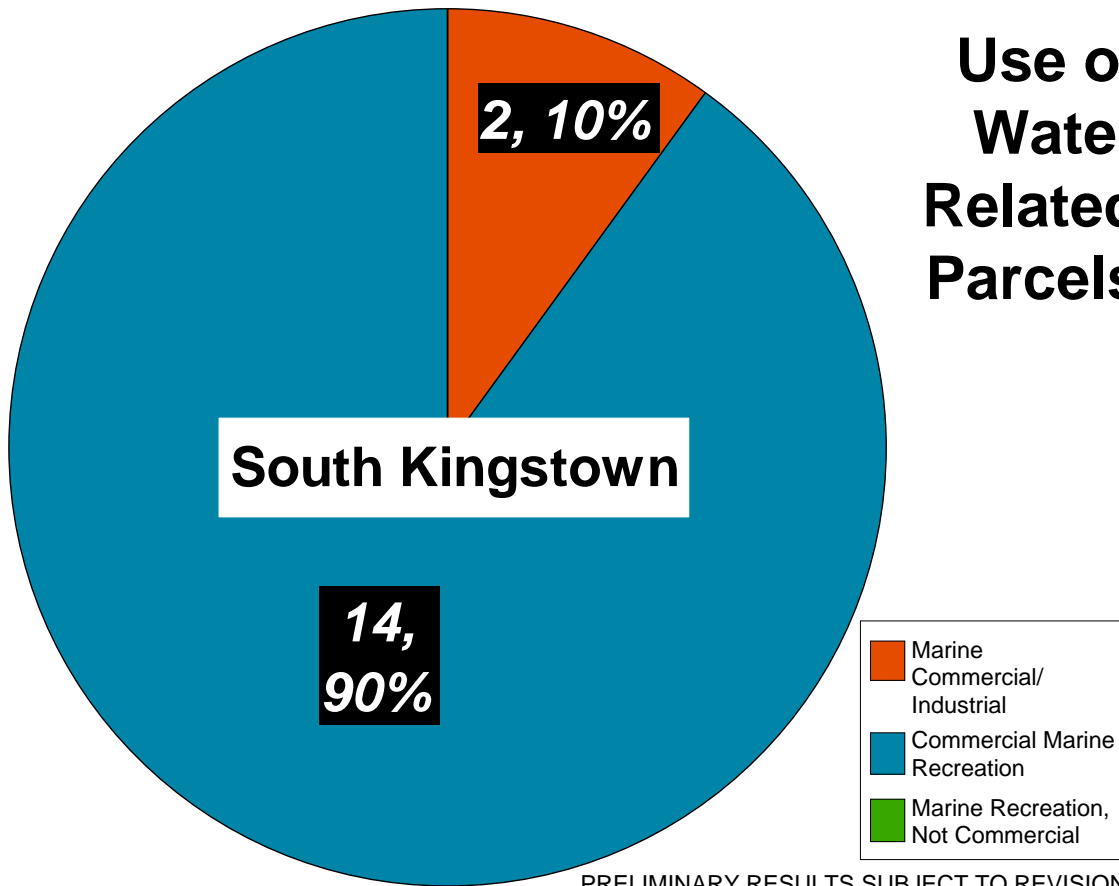
## Use of Water Related Parcels



## Use of Water Related Parcels



## Use of Water Related Parcels



## Use of Water Related Parcels

